



WORLDWIDE ERC® WEBINARS

Thursday, July 27, 2017 11:00 am EDT

**Worldwide ERC® would like to
thank today's sponsor:**



global mobility. **inspired thinking.**SM





WORLDWIDE ERC®
WEBINARS

Increased Efficiency through Data Integration

WORLDWIDE ERC[®] WEBINAR DISCLAIMER

The views, opinions, and information expressed during this webinar are those of the presenter and are not the views or opinions of Worldwide ERC[®]. Worldwide ERC[®] makes no representation or warranty with respect to the webinar or any information or materials presented therein. Users of webinar materials should not rely upon or construe the information or resource materials contained in this webinar as legal or other professional advice and should not act or fail to act based on the information in these materials without seeking the services of a competent legal or other professional.



Webinar Instructions

Technical difficulties?

- Dial 866.779.3239, or e-mail questions to support@webex.com

Sound Troubles?

- If your sound quality is poor, check your Wi-Fi strength or connect via cable.
- Call in using the phone number listed under the “Event Info” tab in the upper left-hand corner.

To return to meeting room window:

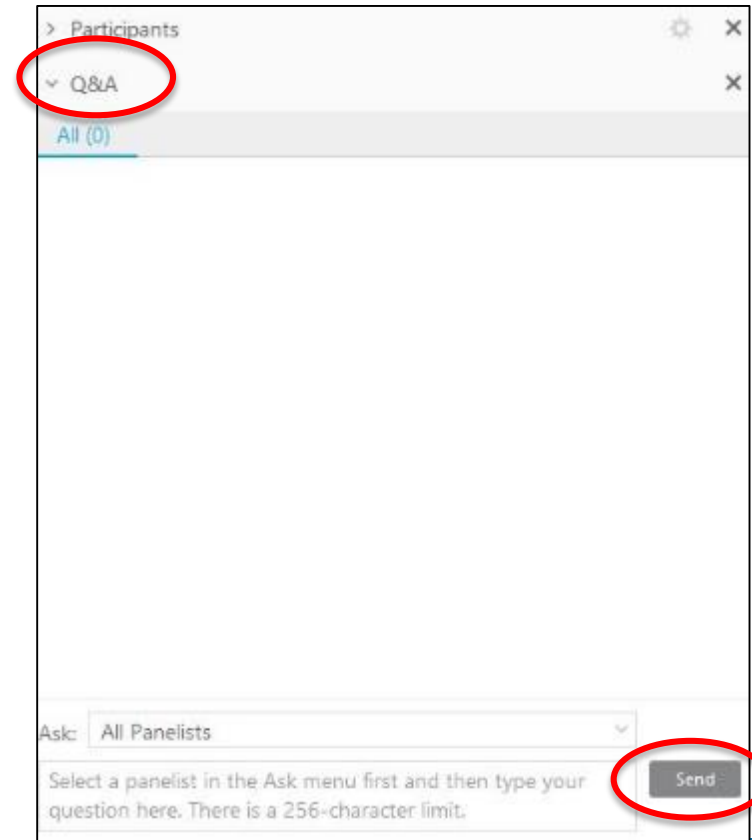
- If you are in full screen mode, you may return to the meeting room window by clicking the View Meeting Room button located at the bottom left corner of your screen.



Q&A Instructions

- Submit questions through Q&A dialogue box
- Box is located in lower right corner of screen
- Do not use the Chat Box
- Be specific
- You may submit your question at any time

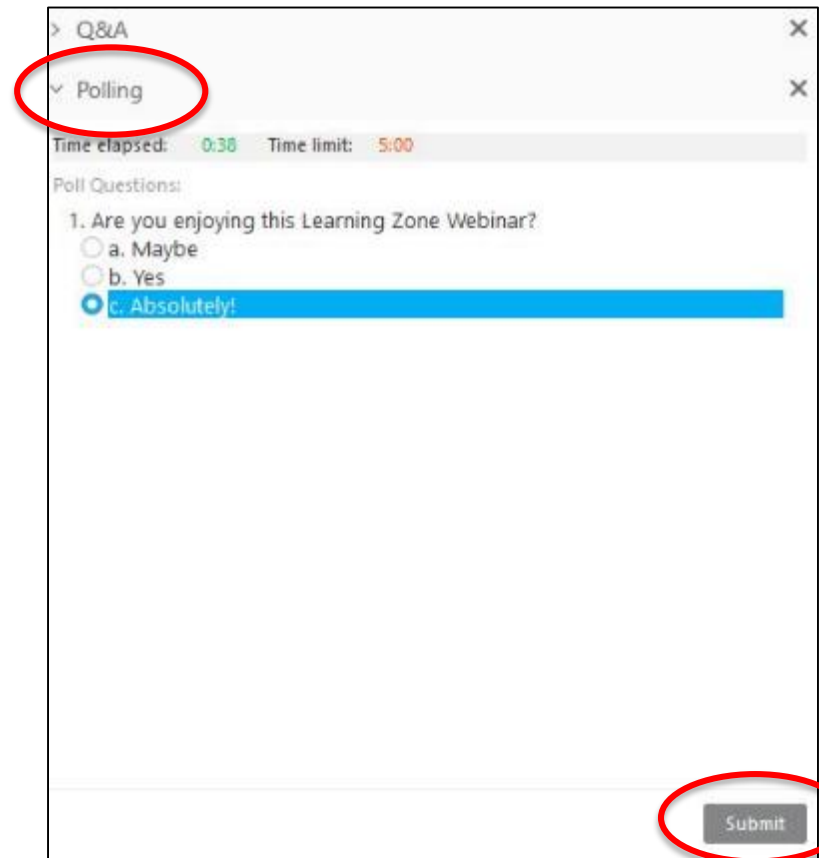
Q&A Dialogue Box:



Polling Instructions

- The Polling Box appears below Q&A Box
- Question will appear on slide and in the Poll Box
- Submit answer quickly
- Results will display in the same location

Polling Box:



The screenshot shows a web interface with a 'Polling Box' window. The window title is 'Q&A' and it contains a 'Polling' section. The 'Polling' section is circled in red. Below the title, it shows 'Time elapsed: 0:38' and 'Time limit: 5:00'. The 'Poll Questions:' section contains a question: '1. Are you enjoying this Learning Zone Webinar?'. There are three radio button options: 'a. Maybe', 'b. Yes', and 'c. Absolutely!'. The 'c. Absolutely!' option is selected and highlighted with a blue bar. At the bottom right of the window, there is a 'Submit' button, which is also circled in red.



CRP[®] and GMS[®] Certification

If you are a **CRP[®]** seeking CE credit for this webinar, you must utilize the CRP[®] Recertification Credit Form, available online at:

<http://www.worldwideerc.org/Education/CRP/Pages/crp-recertification-form.aspx>

(please note that all (S)CRPs must use this form and pay the \$8 admin fee to receive CE credit)

If you are a **GMS[®]** seeking CE credit for this webinar, you must include the name/date of this webinar on your GMS[®] Renewal Application (at the time you apply for recertification). The Renewal Application is available online at:

<http://www.worldwideerc.org/Education/GMS/Pages/GMS-Renewal-Application-Form-Video.aspx>



Today's Presenters



Romaine Dillner
Senior Policy Consultant
724-382-4530
rdillne@aires.com



Anand Diraviyam
Director, Product
Developments
412-677-1660
adiravi@aires.com



Jeba Jothimoni
Senior Solutions
Architect
412-677-1693
jjothim@aires.com



Agenda

1

Problem

2

Solution

3

Benefits

4

Challenges

5

Where do I
start?



Mobility/ HR Team

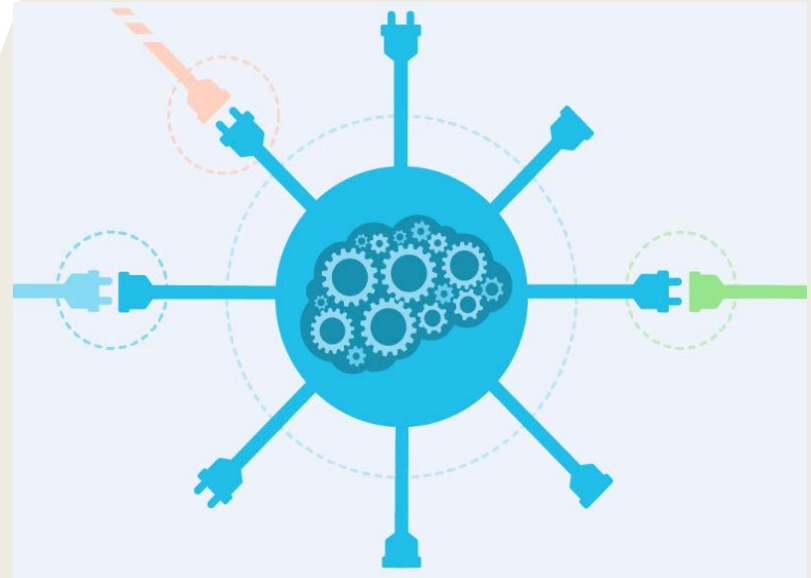
- How can I have an seamless experience when initiating a move?
 - I have to enter the same employee data in the various HRIS/Payroll/RMC system
 - The data reporting on mobility program activity is not accurate

Relocating Transferee

- How can I have a unified relocation experience?
 - I need to provide my relocation needs to multiple relocation service partners
 - I have to access my relocation details in different systems and piece it together?

How to fulfil these expectation?

- HR/Mobility Team
 - Make all of the technology I interact with, talk to each other
- Transferee
 - Make all of the relocation service providers share my relocation needs

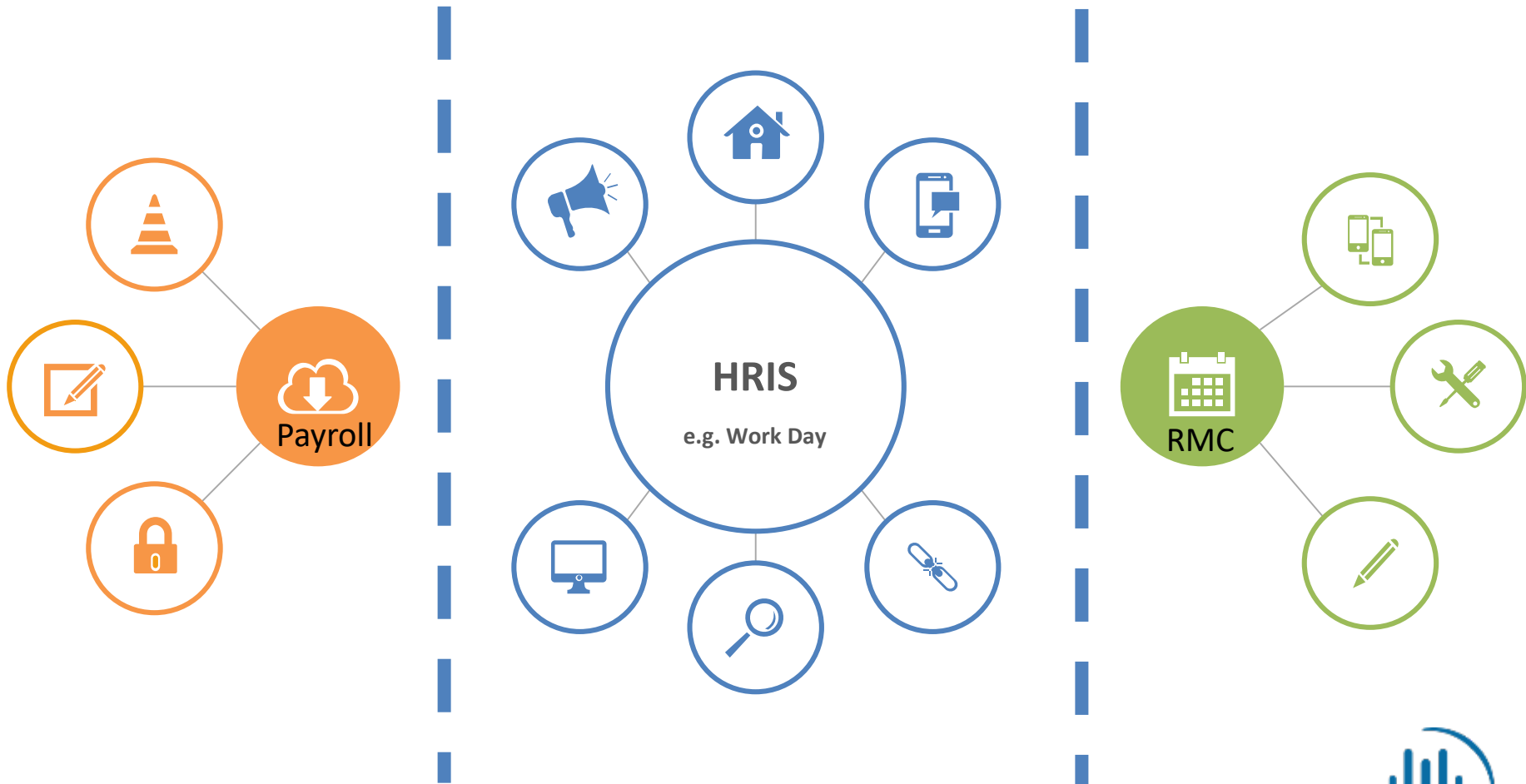


Poll Question

On a scale of 1 to 5 how would you rate your company's current state of system/data integration maturity?



Mobility Eco-System

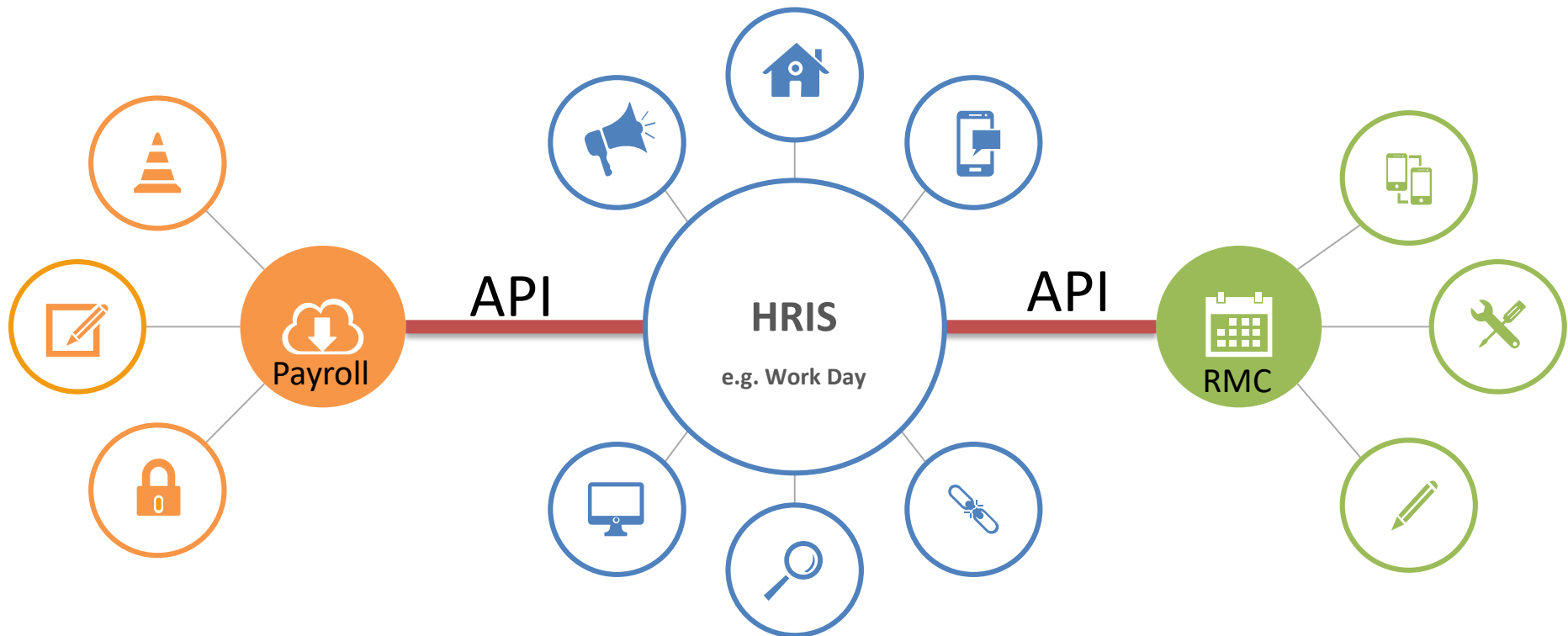


What is an API ?

Application Program Interface (API) is a set of routines, protocols, and tools for building software applications.

An **API** specifies how software components should interact with each other.

Mobility Eco-System





Why would I want an API?

The benefits:

- A productive mobility team who can focus on strategic tasks of providing value to mobility rather than admin work or record keeping
- Accurate reporting data used for meaningful conversation regarding program activity
- A great unified transferee experience

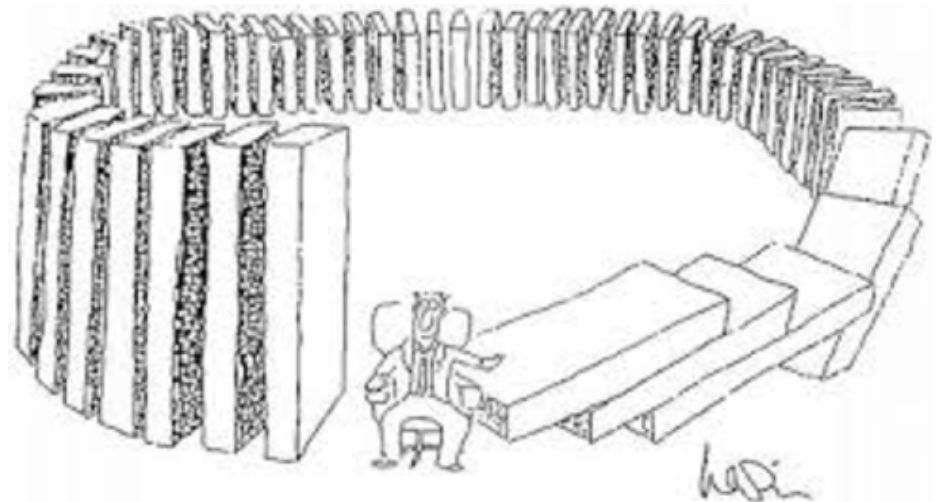
What are the challenges?

Do I have a common data dictionary for the data I am managing?



What are the challenges?

Do I have a good understanding of how the change in data impacts other stakeholder of my company's eco system?



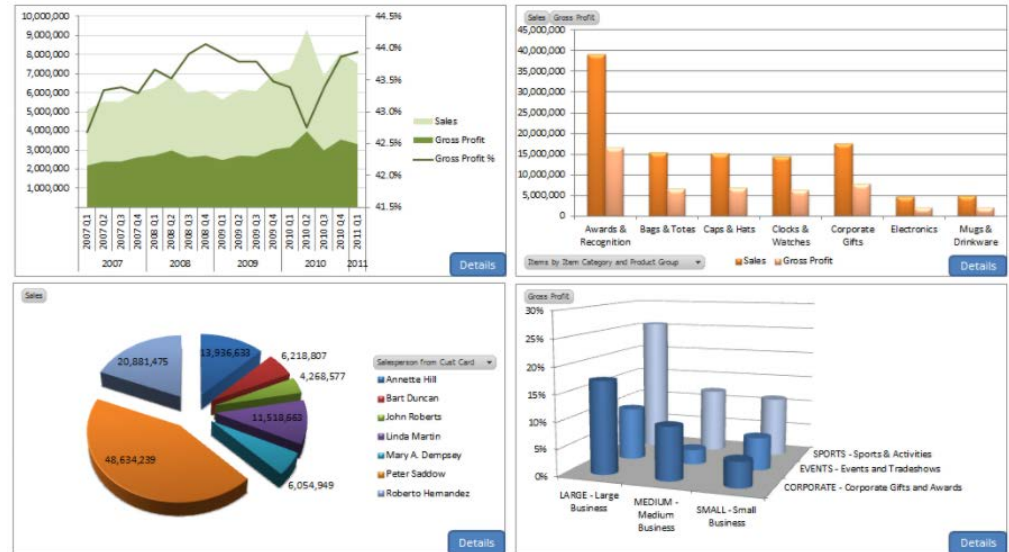
What are the challenges?

Do I have the support of the company's technical resources to assist and interface with the integration effort?



What are the challenges?

Do I have proper data analytics tool to import the data from various sources to tell me the complete story?



What are the challenges?

How mature and flexible is the relocation provider's technology?



What are the challenges?

Does the data transfer pass Information Security (InfoSec) review?

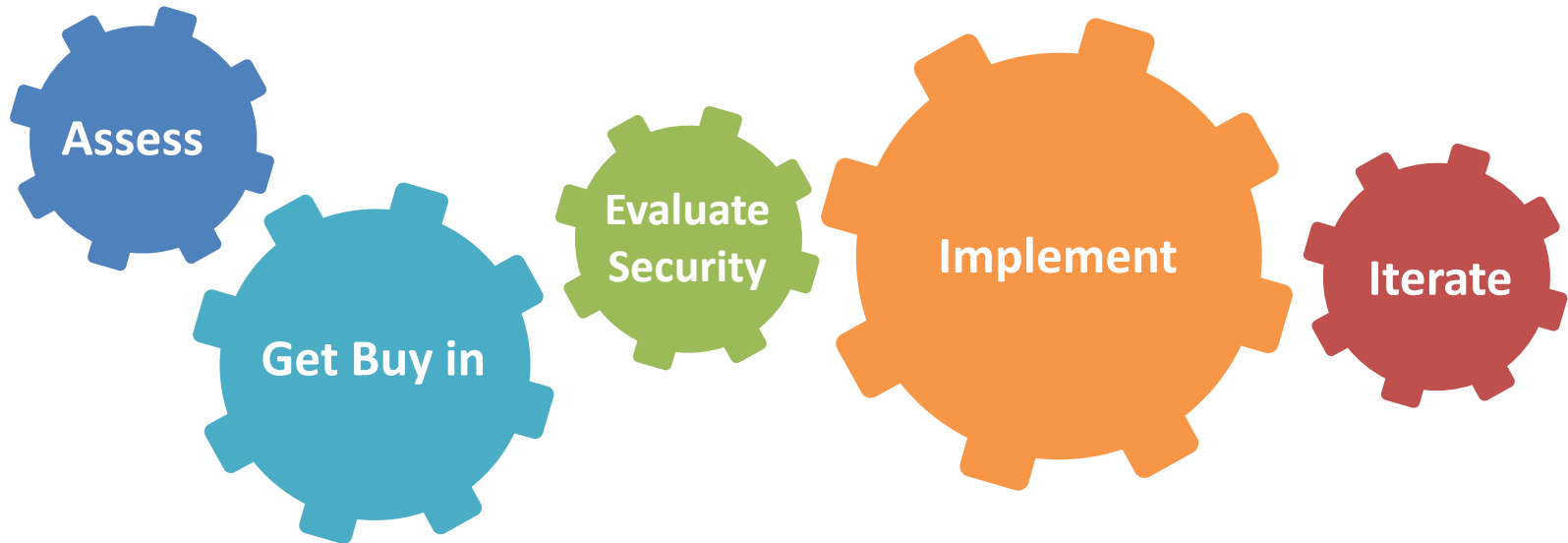


Poll Question

What is the primary challenge I see with system/data integration?

- 1) Company's support for technology resource
- 2) Common understanding of data between various stake holders
- 3) RMC/Partners ability to support initiative
- 4) Lack of knowledge of how to use company system

Where do I start?

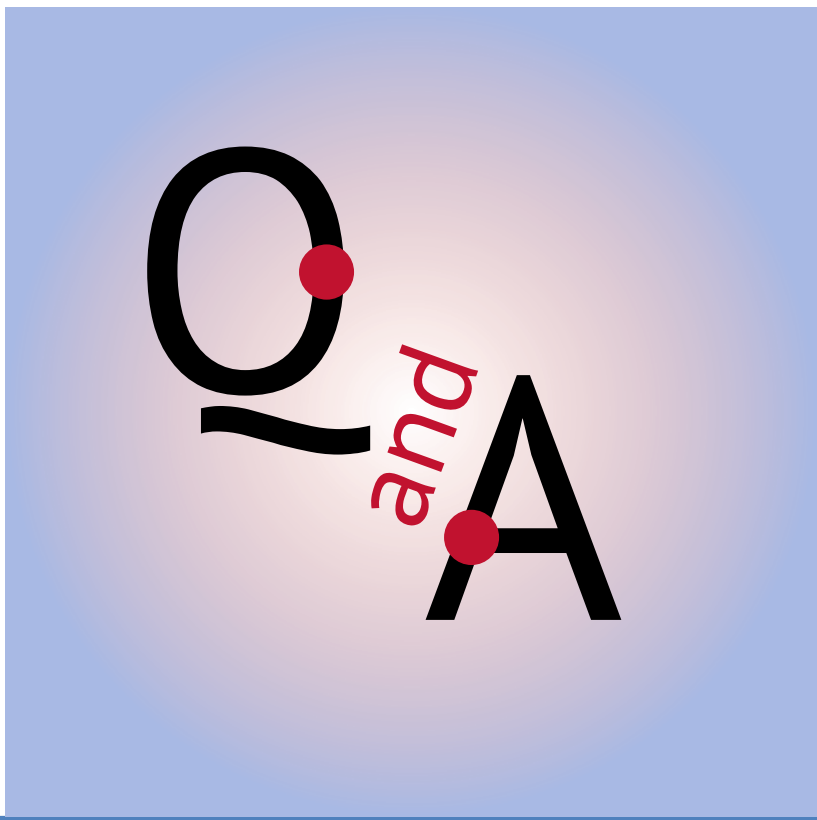


The scope of integration can start very small and be iterated to a larger scope

How do I sell this internally?

- Benefits
 - Data Efficiency
 - Staff Efficiency
 - Data integrity
- Investments
 - Internal technology resources
 - Technology platform

Questions & Answers



Thank you for attending!

Visit the Worldwide ERC® web site at www.worldwideERC.org, or contact Worldwide ERC® for more information on these topics. 703.842.3400

